



Nigeria

Country Fact Sheet 2024

Funded by:



Federal Office
for Migration
and Refugees



Publisher

International Organization For Migration (IOM) Germany

Charlottenstraße 68
10117 Berlin
Germany
T. +49 911 43 000
F. +49 911 43 00 260

iom-germany@iom.int
<https://germany.iom.int/>

This project is funded by the German Federal Office for Migration and Refugees (BAMF).



The information contained in this Country Fact Sheet was researched with best intentions and care. However, IOM Germany assumes no responsibility or liability for any errors or omissions. Furthermore, IOM Germany cannot be held accountable for conclusions or decisions drawn from the information provided in this Country Fact Sheet.

For further information on voluntary return and reintegration, please visit the information portal www.ReturningfromGermany.de, or contact your local return and reintegration office.

© IOM December 2023 Information may be outdated due to dynamic developments in the country.

Table of contents

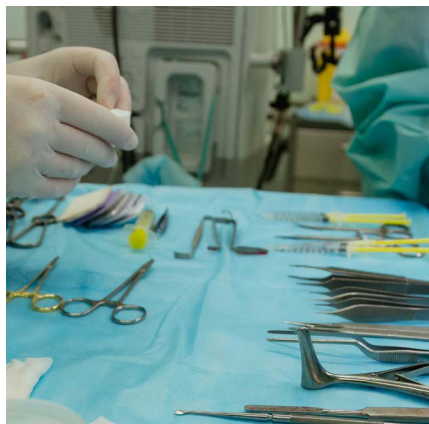
1. Health Care	_____
2. Labour Market	_____
3. Housing	_____
4. Social Welfare	_____
5. Education	_____
6. Children	_____
7. Contacts	_____
8. At a Glance	_____
9. Virtual Counselling	_____

1 Health Care

General information on health care

The Nigerian healthcare system consists of both public and private health care facilities. Most public health facilities offer both secondary and tertiary level of healthcare with availability of multiple specialists. The public health facilities are much cheaper in comparison to the private health facilities. However, the access to care is more convenient. Both private and public health insurance are available in Nigeria. The public health insurance provides benefit packages that cover both primary, secondary and tertiary level of care.

The insurance covers 90% of the medication cost, medical consultation fee, laboratory investigations, hospital admission fee up to 21 days cumulative hospital stay per year, 50% of cost for radiological investigations, and surgical fees. Private health insurance is also available. The extent of coverage within the private insurance depends on the purchased premium plan but generally there is provision for primary and secondary level of care. For public health insurance, self-employed individuals are registered under the Voluntary Contributor Social Health Insurance Scheme. The member fee for this Scheme is USD41.7-45000 NGN for individual and 60000 NGN for family (4-8 Members)- this is renewed every 12 months. Interested persons will obtain a scratch of USD 1.5 (500 NGN) and then proceed to the web site for a membership registration fee of USD41.7 -45000 NGN for individual and 60000 NGN for family (4-8 Members)-. For tailored guidance, send e-mail to vcship@nhis.gov.ng.



For individuals in formal employment and insured by employer, 10% of the monthly salary is deducted monthly, however the coverage extends to spouse and four dependents. Cost of private health insurance varies depending on existence of health issues and level of care needed

Availability of medical facilities and doctors

- Lagos State University Teaching Hospital Lasuth, 1 - 5, Oba Akinjobi Road, Ikeja, Lagos
- National Hospital Abuja, Central Business District, Abuja
- University of Benin Teaching Hospital UBTH, Igbowo road, benin city, Edo State
- Delta State University Teaching Hospital
- Asaba, Delta State
- University of Port-Harcourt, Cross-River State
- Aminu Kano University Teaching Hospital, Kano state

1 Health Care

Admission to medical facilities

First, the patient should visit a clinic for the diagnosis. Based on the diagnosis, he/she will then be referred to other clinics or special hospitals, if required. The National ID/Evidence of registration in the hospital is usually requested for.

Availability and costs of medication

Most generic medications are available except for few newly licenced/FDA approved medications e.g. anti-neoplastic medications, psychiatric medicines, immune agents, newly developed medications for emerging infectious diseases etc. that may not be available. Cost of drugs and services varies according to level of care and type of illnesses. Drugs are usually purchased from pharmaceutical stores outside the hospital upon presentation of doctor's prescription.

Access for returnees

Eligibility and requirements: The public health insurance scheme is available for all Nigerian citizen. Presentation of the National ID and payment of the member fee/contribution are the only requirement.

Registration procedure: For Public health Insurance, registration can be done online via the National Health Insurance Scheme NHIS website <https://www.nhis.gov.ng/>. After payment of membership fee, waiting period is 60days before activation of the benefit package.

Required documents: National Identity Cards and passport photograph.

2 Labour Market



Photo: Olumide Bamgbelu/Unsplash 2019

General information on labour market

The economical active or working age population of Nigeria, which falls within the age range of 15 – 64 years, stands at 77.3% of the population according to the National Bureau of Statistics of Nigeria. The public sector contributes to 24% of employment in the country it declined by 7.95% from 2023 in Q1 2024 according to the National Bureau of Statistic, while the private sector contributes to a larger part of employment: 76% significantly. The labour force in Nigeria is

currently 79.5% as of Q3 as against 77.3% in Q1 of 2024. The labour force covers persons ranging from 15 – 64 years of age. Job opportunities exist in the private sector; however, they are not enough to counteract the unemployment rate.

Finding employment

The Federal Ministry Of Labor and Employment through the National Electronic Labor Exchange (NELEX), and Migrant Resource Center (MRC) provides employment policies and

2 Labour Market

programs for employment generation, actualization of the National Action Plan on employment creation, and the local employment content initiatives of the Federal Government. These programs and policies are executed through agencies of the Ministry, local and international social partners. There are several online websites and recruitment agencies that are popular. These include the following:

- <http://ngcareers.com>
- <http://myjobmag.com>
- <http://www.hotnigerianjobs.com>
- <http://www.jobseeker.ng>
- <http://www.nigerianjobportal.com>
- <http://www.glassdoor.com>

Unemployment assistance

General information on public and/or private unemployment assistance: The Federal Government of Nigeria has made available various unemployment assistance programs ranging from entrepreneurship to vocational trainings under the following schemes: Npower, YOUwin, SURE-P. Other TVET and entrepreneurial programs are initiated by the Industrial Trust Fund (ITF). Currently, there is no financial assistance offered in Nigeria. The state does not pay unemployment assistance at the national level.

Further education and training

The Nigerian government has developed vocational training programs through the National Directorate of Employment (NDE) and the Small and Medium Enterprise Development Agency

of Nigeria (SMEDAN) to respond to the challenges of high unemployment. These programs aim to improve the productivity, marketable skills and employment of citizens through Vocational and Technical Training Centres and Employment Service Centres. These trainings are accessible for free upon registration. Private centres exist that provide courses for a fee.

Access for returnees

Eligibility and requirements:

The vocational training programs respond to the challenges of high unemployment, an under-skilled workforce for every Nigerian citizen (especially the youths). NELEX and NDE through the Migrant Resource Center shares details and assist migrants to find jobs, TVETs, and other opportunities available.

Registration procedure:

National Directorate for Employment and the National Electronic Labor Exchange (NELEX) through the Migrant Resource Center and SMEDAN shares details and assist migrants for jobs, TVETs, and other opportunities available.

Required documents:

National Identity Card and passport photograph.

3 Housing

General information on housing

The price for rent in Nigeria depends on the location, size and the features of house or apartment. The price of houses in some cities are higher than others (with some having significant differences). Generally rental costs in Nigeria start from 450 – 19,000 USD in cities, and 200 – 1000 USD for apartments in the countryside:

- Studio Apartment: ranges from 200 – 450 USD in countryside and 450 – 1100 USD in the cities.
- Mini flat (1 room): ranges from 400 – 600 USD in countryside and 580 – 2500 USD in the cities.
- Bungalow (2 rooms): ranges from 450 – 1100 USD in countryside and 1250 – 5000 USD in the cities.
- Bungalow (3 rooms): ranges from 750 – 1850 USD in countryside and 1900 – 8000 USD in the cities.
- Duplex: ranges from 6500 – 19,000 USD in the cities. Duplexes are mostly found in cities.

The price and demand for houses in cities are high, and the price for land is highly dependent on location, size and features thereof. Whereas the demand for rent has increased, that for land has also followed suit. The approximate cost of utilities in Nigeria per month is as follows: Gas (120,000 NGN), water (15,000-40,000 NGN), public electricity (18,000 – 60,000 NGN), private or generators (36,000 – 70,000 NGN). There is no temporary housing facility for returnees, except shelters for trafficked person and returnees who are identified as vulnerable.

Finding accommodation

There are no government or public agencies that returnees can contact for finding accommodation at the moment. But there are private real estate agencies that are available in neighborhoods and on websites. Some of these websites are listed below.

- <https://propertypro.ng>
- <https://nigeriapropertycenter.com>
- <https://privateproperty.com.ng>
- <https://www.property24.com.ng>
- <http://flatfy.ng>

Social grants for housing

Currently, there are no social grants or loans available for housing by the government. However, there are some private banks that provide loans to build a house with terms and condition according to their respective policies.

Access for returnees

Temporary housing facilities: Bakhita Villa, Ipaja Lagos; COSUDOW Benin, Edo state; Daughters of Abraham Foundation, Jabi Abuja.; Web of Heart Foundation Lagos, IOM-LASEMA Transit Center Lagos.

Social housing: vulnerable returnees are identified for temporary housing upon arrival through needs assessment, especially for VoTs.

Required documents: A referral letter, and any means of identification will be required which will be submitted to via a requesting agency to these temporary shelters/ housings.

3 Housing

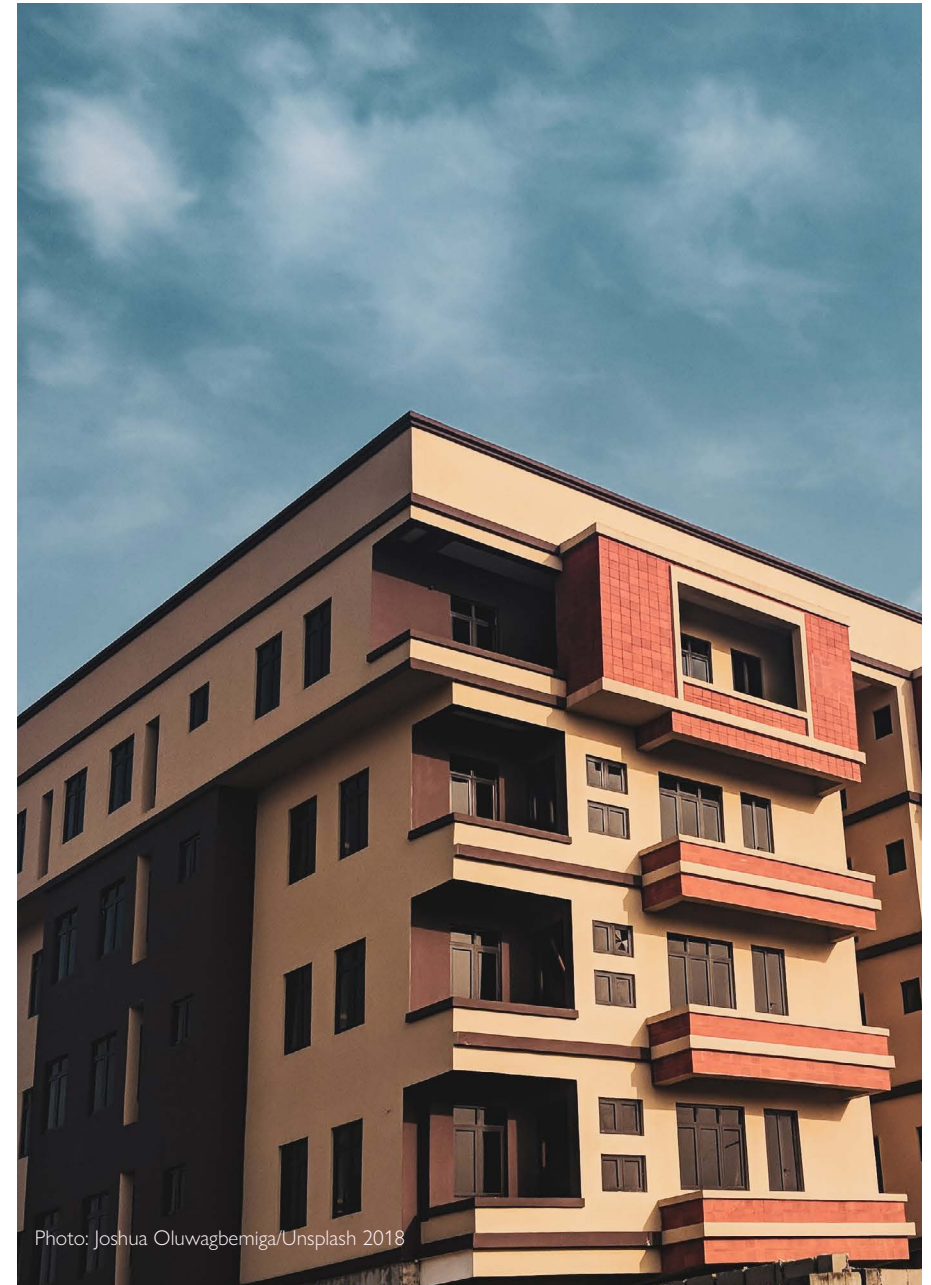


Photo: Joshua Oluwagbemiga/Unsplash 2018

4 Social Welfare

Social Welfare System

The Federal Government currently does not provide funding for child support, old-age, disability, foster care, war veterans, and care dependency. There are no welfare systems available in Nigeria by the government at the moment. Social welfare is mostly provided by family members, philanthropic organizations (missions and religious centres), and international aid partners. Although, the school feeding programme by the government of Nigeria was stopped in 2023, although the current government has hinted on resuming the support. But it is currently not active. Because there is no welfare system available by the government at the moment, except for the one-time government hardship palliative for cushioning the effect of rise of commodities due to economic changes (which require tax index payer number).

Pension system

All employees in the public sector enter the pension system as soon as they are employed by the government. The private sector business of less than 3 employees, or more than 15 employees can also enter them into the pension system. Employees can have access to their pension when they retire at the age of 50. The pension salary is determined according to the service year and the base salary. Employers and the employees contribute minimum percentages of the employees' salary to the scheme every month. The minimum contribution for the employer is 10%, and 8% for the employee. Procurement of annuity that provides regular income to the contributor or fund a programmed withdrawal.

Vulnerable groups

Children, pregnant women, elderly people, malnourished people, and people who are ill or immunocompromised, refugees, prisoners, migrant and mobile population, victim of trafficking, legal migrants, internally displaced persons are particularly vulnerable when a disaster strikes, and take a relatively high share of the burden associated with emergencies. Poverty, fragmented social issues, and gender inequality all exacerbate vulnerability and contribute to the increasing vulnerability of certain individuals, especially women and girls.

The Nigerian government has launched initiatives aimed at alleviating poverty in the general population. These efforts include the National Poverty Alleviation Program, the National Economic Empowerment and Development Strategy, and the New Partnership for African Development. The Federal Ministry for Women's Affairs and Social Development also has a program for orphans and vulnerable children that is part of the federal government's impact mitigation strategies. NGOs have supported vocational skills acquisition for vulnerable and high-risk groups. These are inadequate and the lack of economic empowerment could further increase the vulnerability of the groups. Vulnerable Group Social Health Insurance Programmes are designed to provide health care services to persons who due to their physical status (including age) cannot engage in any meaningful economic activity. They include the following:

Photo: Unsplash 2019/ Christian Weiss

4 Social Welfare

Physically Challenged Persons Social Health Insurance Programme (PCPSHIP)

This is a programme designed to provide health care services to physically/mentally challenged persons, who due to their physical status cannot engage in any meaningful economic activity. Membership: Physically/mentally challenged Persons will be covered under the programme.

Prison Inmates Social Health Insurance Programme (PISHIP)

A programme designed to provide health care services to inmates of Nigeria Prisons and offending minors in Borstal Homes, who by virtue of their restriction, cannot engage in any activity to earn income. Membership: Convicts, Awaiting trial (remanded in prison custody), Offenders who are minors in Borstal Homes.

Children Under Five (5) Social Health Insurance Programme (CUFSHIP):-

Children under Five Social Health Insurance Programme (CUFSHIP) is a programme designed to cover the health needs of children under the age of five (5) years across the country, who are considered vulnerable. Membership: Children under the age of five (5) years especially those whose parents are participating in Community Based Social Health Insurance Programme (CBSHIP).

Persons of old age who do not have anyone to look after them. The Federal, State, Local Government, Development Partners and Civil Society Organizations pay contributions in advance into the

Vulnerable Group Fund for all the vulnerable groups. There shall be a processing/waiting period of ninety (90) days before a participant can access healthcare services. The requirement for registration is an accreditation by the Nation Health Insurance Scheme, which does not necessarily require an ID but rather a means of justification for the applicant's vulnerability.



Photo: Omotayo Tajudeen/Unsplash 2019

5 Education

General information on education

The education system in Nigeria is overseen by the Ministry of Education. The educational system adopted in the country is the 6-3-3-4 system of education in Nigeria, the recipient of the education would spend six years in primary school, three years in junior secondary school, three years in senior secondary school and four years in a tertiary institution. It starts with primary school at the age of 5, which goes on for six years before graduating to other level of the system.

The pre-primary level targets children aged 0,5-4. The primary level targets children aged 5-11. The secondary level targets children aged 11-13 (Junior Secondary) and 14-17 (Senior Secondary). Higher education normally caters to students aged 18 and above, including college, university and professional schools.

Cost, loans, and stipends

The cost for public education is low and affordable compared to the private educational institutions. As for private schools and universities, the tuition fee varies from one institution to another. In the public sector. The Federal government has signed into law a bill that provides interest-free education loans for Nigerians willing to acquire tertiary education. While they pay in installments two years after completing their participation in the National Youth Service Corps (NYSC) programme. However, there are scholarships that are received based on merit through grants made available through NGOs, banks, philanthropists, religious bodies. These

scholarships are accessed based on peculiar criteria designed by these bodies.

Approval and verification of foreign diplomas

The government has set up an education verification system that verifies and approves foreign certificates and diplomas. The returned persons, who studied in the host country, will need to undergo the following procedures: First, they need to bring a certificate from the school they have attended in the host country. The certificate must be confirmed by the Nigerian Embassy in the host country and the Ministry of Foreign Affairs, or through the Nigerian Education Verification System. Additionally, applicants must provide a copy of their passport (including visa and residency information, if necessary). Private schools demand additional tests and procedures.



Photo: Oladimeji Ajegbile/Onsplash 2019

6 children

Access for returnees

Registration procedure: The returnee will have to visit or contact the school directly and enquire if admission is open, and then apply according to the steps outlined by the institution.

Required documents: ID of the child and parents. Results/certificate from former institution attended.

Documents to require a student loan: Application form, cover letter signed by head of institution, admission letter from institution, 2 passport photograph from 2 different guarantors with their employment details.

General situation of children and infants

In order to establish safe water supply and sanitation especially for children, the country established the Child Right Act (CRA) (2003), which was codified into the law in 2009. It aims to tackle the HIV/AIDS epidemic, creates job opportunities for women so they are better able to take care of their children, providing universal basic education, and making the primary health care system better. So far, 24 out of 36 states of Nigeria have adopted the CRA as a state law. There are therefore twelve (12) states in Nigeria that are yet to adopt the CRA in their laws of the 36 states of the federation.

A child as defined by Child's Right Act (2003) is any person under the age of 18. Through the CRA strategies have been employed and positioned to promote and protect every child across the states in Nigeria. In particular, the Child Rights

Act considers the welfare and needs children in ensuring that the children are safe from abuse and violation. Nigerian children fall victim to a wide range of abuses and harmful traditional practices. Unfortunately, the implementation of the CRA is patchy with many local authority bodies unaware of their duties under the law. Nigeria accounts for more than one in five out-of-school children anywhere in the world. Although primary education is compulsory, only 67 per cent of eligible children take up a place in primary school. If a child misses school for even a short time there is only a low chance, only about 25 per cent, that the child will return. Girls suffer more than boys in terms of missing out on education. In the north-east of Nigeria only 41 per cent of eligible girls receive a primary education, 47 per cent in the north-west. Social attitudes can also negatively impact the education rates especially in northern Nigeria. In north-eastern and north-western states, 29 per cent and 35 per cent of Muslim children, respectively, attend Qur'anic education, which does not include basic education skills such as literacy and numeracy. These children are officially considered out-of-school by the Government.

Poverty remains significant at 70.7% in multidimensional poverty, 40.7% of Nigerians are estimated to live below the international poverty line by the end of 2024. In Africa's biggest economy. For a country with massive wealth, plenty of natural resources such as oil, and a huge young work force to support commerce as well as a well-developed economy, the level of poverty remains unacceptable. And one of the terrible consequences of Nigeria's poverty is child poverty.

6 children

Child poverty can mostly be found in rural areas rather than urban areas. The vulnerability of children (who are dependent on their parents/guardians) is classified by the chances or risk of their household to either fall under the poverty line or if already poor, remain in poverty. In a landmark report released in 2024 by a Commission convened by UNICEF and the Federal Ministry of Budget and Planning, Nigeria ranks as the country with the world's 2nd-highest climate risk for children with 67.5 per cent of these children (aged 0–17 years) in Nigeria experience multiple forms of poverty. The ranking is based on factors such as child survival, well-being, health, education, nutrition, equity and income gaps.

Nigeria is a multi-ethnic country with diverse cultural practices. Different ethnic factors such as difficulty in getting permission to seek medical treatment also contribute to social stratification and impact the wellbeing of children and provide serious barriers to timely health care utilization in some parts of Nigeria. For instance, it is culturally noted that Hausa women of Northern Nigeria are rarely seen in public due to an adoption of a very strict form of purdah (i.e. wife seclusion). As a result of this culture of spatial constraint, many Hausa women have limited autonomy and freedom of movement, and hence are subject to male dominance and social control, which will further affect the children's access to health care. Women in purdah are expected to remain indoors, except in extreme situations such as for getting medical treatment and even that requires the husband's permission.

(Non-) governmental actors dealing with children's well-being and rights

- Save the Children has been working in Nigeria since 2001 to ensure all children survive, learn and are protected. They protect children from all forms of violence, especially girls, orphans, vulnerable children and children affected by conflict.
- Saffron SDGF engages with communities, adding value to the lives of vulnerable and disadvantaged children, women, girls, the elderly, youth and communities, contributing to sustainable improvements of their economic, social and environmental circumstances.
- Christian Aid Nigeria works with local partners and communities to fight injustice, respond to humanitarian emergencies, campaign for change, and help people claim their rights and access services such as health-care and education for children.
- Girl Children Concerns (GCC) has had a strong focus on meeting the educational and social needs of young girls affected by Boko Haram insurgency in the North-East especially Borno State, giving these girls education, life skills, sexual and reproductive health education and mentoring.
- UNICEF is committed to realizing the rights of all children to help them build a strong foundation and have the best chance of fulfilling their potential. We believe that ensuring a happy and healthy child begins before birth:

6 children

from ensuring his/her mother has access to good neonatal care and delivering in a clean, safe environment to reaching adulthood as a responsible, healthy and informed parent to the next generation.

- Street Child has been responding to the crisis in North East Nigeria since 2016. Working in collaboration with five local organisations, Street Child has implemented major integrated education and child protection programmes in order to re-establish education for 29,000 children across the three worst-affected states of Borno, Adamawa and Yobe. Operating through an integrated child protection and education approach, we are working with the community and provide clear support networks to make children feel safe and protected and to give them a chance to go to school and learn.
- Child Right And Rehabilitation Network (CRARN) is charity organisation registered with Corporate Affairs Commission in Nigeria and a 501c Charity in the US. CRARN

- began operation by a small group of volunteers in 2003 to shelter a few children who had been accused of possessing witchcraft power as part of a widespread witch-hunt in their community, which left hundreds of people dead in the space of two months.

Access for returnees

Entry requirements: The issuance and authentication of international birth certificates, vaccinations, child passport (if available) is done through the National Population Commission (NPC) who will confirm these documents to the relevant embassies. The documents will be submitted by the institution to the NPC and feedbacks will be received in few weeks after submission to the NPC.

Immediate steps upon return: The returned migrant will need to visit the school or institution to declare intention to continue schooling. There are registration periods for schools; the returned migrants will have to submit an I.D, proof of attendance of previous school, and take up an educational assessment (kindergarten or childcare do not require this)



Photo: Unsplash 2020/ Daoud Abismail

7 Contacts

Avon Health Care Modic Medical Centre
6 Akenzua Street, Off Adesogbe Road, Ogogugbo 300271, Benin City
Tel.: 0803 703 3044
info@avonmedical.com
www.avonhealthcare.com,
www.avonmedical.com

Federal Neuro-Psychiatric Hospital
Medical Center specialized mental, psychiatric, and medical services.
New Lagos Road, Use 234052, Benin City, Edo State.
Urora Road, Off Iduomwinna and Benin-Agbor Roads, Benin City, Edo state.
0803 223 1189
contactus@fnphbenin.gov.ng

Concern For Women and Youth Empowerment (COWOYEM)
Women and Youth empowerment
No. 92 Direct Labour Agency Road, Asaba, Delta State, Nigeria.
08035187424, 07067123952
concern4wye@yahoo.co.uk

Capital Health Centre
Medical Centre
No. 1 Eresoyen street off Urubi street Iyaro, Benin City.
Edo State.
Tel.: 09086774477
care@capitalhealthcare.com.ng
https://www.chscnigeria.com/

Genesis Hospital
Specialized services in cancer treatment, Cardiac, Pain
67 Oduduwa crescent, Ikeja GRA Lagos
+234 1 632 3388, +234 703 8253 044
info@genesishospitalng.com
www.genesishospitalng.com

Girl Children Concerns (GCC)
Center for vulnerable adolescent girls
No. 5, Erie Close, off Erie Crescent, Maitama
+2348113291867
+2348098640822
info@girlchildconcerns.org
https://www.girlchildconcerns.org

Development Initiative for Community Enhancement
Development NGO
Suite C 35 Danziya Plaza Central Area Abuja. Plot 25, Aliyu Attah Road, Off IBB way, Lokoja, Kogi State.
07057606868, +234 705 385 8209

Lagos University Teaching Hospital
Specialized services in cancer treatment, Cardiac, Pain
Ishaga Road, Idi-Araba, Lagos
0903 879 7907, 0807 059 1395
info@luth.org.ng
www.luth.org.ng

GIZ Nigeria
Reintegration of returned migrants, vulnerable, victims of trafficking
592 Idejo Street, Victoria Island, Lagos, Nigeria
T+234 815 499 0888
giz-nigeria@giz.de

Fairview
Internal Medicine, Paediatrics, Obstetrics and Gynaecology
1 Fairview Hospital Drive, Okumagba Avenue, Warri, Delta State.
0806 942 2492
info@fairviewhospitalnigeria.com
www.fairviewhospitalnigeria.com

Child Right and Rehabilitation Network (CRARN)
Shelter for children
1 CRARN Crescent, Ikot Afaha P.M.B. 1042
Eket, Akwa Ibom State – Nigeria
+234 908 558 4091
+234 708 427 6982
info@crarn.net
http://www.crarn.net

IDIA Renaissance
Specialized in reintegration of returning migrant
2, Ihama Road, G.R.A Benin City, Edo State, Nigeria.
(234) 80561 28927
(234) 80629 32409
support@idia-renaissance.org
www.idia-renaissance.org

Federal Medical Centre
Health care service
Nnebisi Road, Isieke, Asaba
Tel.: 0701 918 8232
fmcasaba@hotmail.com, fmcasaba@yahoo.co.uk

Christian Aid Nigeria
Humanitarian emergencies support, help people claim their rights and access services
Plot 802 off Ebitu Ukiwe Street Jabi District, Abuja. Nigeria
+2347032559282
nigeria-info@christian-aid.org
https://www.christianaid.org.uk/contact-us/office/nigeria

International Committee of the Red Cross (ICRC)
Assistance for migrants, refugees, asylum seekers, family reunification, health
436 Kumasi Crescent, off Aminu Kano Way, Wuse II, Abuja
+234 9 413 3683
https://www.icrc.org/en/where-we-work/africa/nigeria

7 Contacts

International Organization for Migration (IOM)
UN Migration Agency
1 Isaac John street GRA Ikeja, Lagos, Nigeria
+234 (0) 90 6265 5575
+234 (0) 90 6265 8205
iomnigeria@iom.int
https://nigeria.iom.int

Justice & Empowerment Initiatives Nigeria
Empowerment of disadvantaged, strategic advocacy
310 Herbert Macaulay Way, Sabo yaba 100001, Lagos
0818 719 6021, 0801 429 7060
info@justempower.org
https://www.justempower.org/

National Health Insurance Scheme
Health Services
443, Herbert Marcaulay Street, Yaba, Lagos State.
08039753274, 0802 626 4895
oakingbade@nhis.gov.ng
http://nhis.gov.ng

Paragone International Health and Support Initiative
Health support
No 252 Zik's Avenue, Awka, Anambara state.
0803 474 2722
paragoneintimation@gmail.com

Migrant Resource Center (MRC)
Migrant resources
FMLE/MRC. Cardinal Olubunmi Okogie road (formally Ikoyi road) by passport Office Ikoyi.
07031375512
info@nelexnigeria.com
http://mrc.nelexnigeria.com

National Pension Commission
Pension
174 Adetokunbo Ademola Crescent, Wuse 2, Abuja, Nigeria.
+234 9460 3930
info@pencom.gov.ng
https://www.pencom.gov.ng

Pathfinders Justice Initiative
Initiative against sex slavery, women and girls
1 Faith Way
Benin City, Edo State NIGERIA
+234 817 612 3228
info@pathfindersji.org
https://www.pathfindersji.org

Lagos State Ministry of Housing
Housing
The Secretariat, Obafemi Awolowo Way, Ikeja, Lagos State, Nigeria.
(+234) 803 222 1979, 0803 319 5157
info@lagosstate.gov.ng
https://housing.lagosstate.gov.ng

New Ikeja Hospital
Medical services
13/15 Gbajobi street off Obafemi Awolowo way Ikeja
08056249499
ihah@newikejahospital.com

Saffron SDGF
Care and support for vulnerable children, women, girls, the elderly, youth and communities
30, Iju Road, Oyemekun Bus Stop, Agege, Ikeja,, Lagos, Nigeria,
100283, Lagos
0818 761 2407, 09095364424
info@saffronsdgf.org
https://www.saffronsdgf.org

Child Right and Rehabilitation Society for Empowerment of Young Persons
Youth empowerment
No. 4 Amadasun Street Off Lucky Ogbebor Way Off Ehigiator Street Off PZ, Sapele Road, Benin City, Edo State, Nigeria.
08023343972
seyp_2008@yahoo.com

Small and Medium Enterprise Development Agency (SMEDAN)
Business development
24 Fatai Atere Way, Papa Ajao, Lagos
08036265073, 08033774866
info@smedan.gov.ng
http://www.smedan.gov.ng

Save the Children Nigeria
Child protection and rights
4 Danube Close, off Danube Street, Maitama, Abuja Nigeria.
+234 813 353 2186, +234 703 189 3125
nigeria.feedback@savethechildren.org
https://nigeria.savethechildren.net/

IOM-LASEMA
Transit center
KM 16, LASU-Igando, Isheri Road, Lagos.
+234 701 5539 114
movementoperationslagos-transitcenter@iom.int

8 At a glance

Measures to be undertaken before return

- *Return documents:* Request documents from the German authorities that might be needed later (this can be either any document that proves he/she was a migrant in Germany or entitled to any type of assistance upon return).
- *Travel ID:* Carry the decision document that he/she has returned to Nigeria as well as Passport and ID, in general a valid travel document to re-enter the country.
- *Accommodation:* Find a temporary accommodation, e.g. in hotels in the city or stay with family or relatives until a permanent residence is found.
- *Transportation:* Get information concerning the arrival at the airport and the onward journey.

Measures to be undertaken before return

- *ID Retrieval:* Register with relevant authorities and should renew their IDs and documents if lost or expired.
- *ID Registration:* Obtain any of the following documents after return; National ID Card, Voters Card, International Passport, driving license
- *Employment:* Visit the Ministry of Labor and Social Affairs if application for a specific social service is wanted. This includes returnees who are living with a disability or are unemployed.
- *Education:* Register children at a private or public school and obtain invoice/quotation for fees.
- *Reintegration:* kindly contact the IOM office for discussion of your business plan, and guide on how to obtain required documents for business setup.
- *Accommodation:* Connect to a estate or house agent, or visit housing website to setup an accommodation inspection before hiring.

9 Virtual Counselling

Migrant assistance in Nigeria

The Virtual Counselling project is implemented by the International Organization for Migration (IOM) in Germany. Migrants living in Germany who are considering a return are offered return and reintegration counselling by IOM staff in Nigeria. Local IOM staff can be contacted in English through online messengers.

This service aims to empower migrants to return in dignity by informing them about various return and reintegration options and assistance programmes.



Contact Jude at IOM Nigeria

WhatsApp: +234 906 265 820 5

Skype: IOM Nigeria

Counselling hour: Monday - Friday, 08:30 a.m. - 03:00 p.m. (CET)